

Big Numbers Box

4,180
population

Almost **1 in 5** households are "older households" - below the national figure

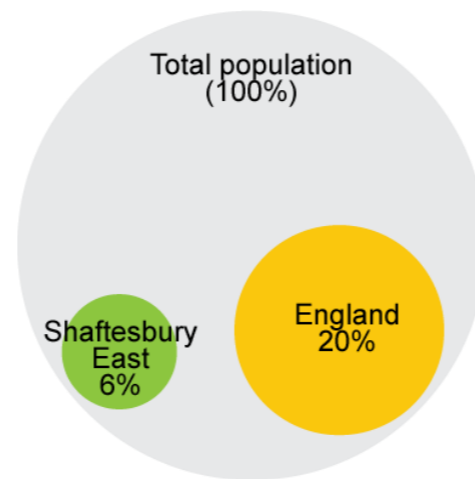
8.3%
people providing unpaid care

House prices are **£27,500** below the district median

1,516
Homes in ward

6 Crimes in May 15

Percentage of the population that are BME



Shaftesbury East ward has one of the higher Black and Minority Ethnic (BME) populations in North Dorset but is still well below the national figure.



Percentage of the current population by age group (2013)



24%
Aged 0-15

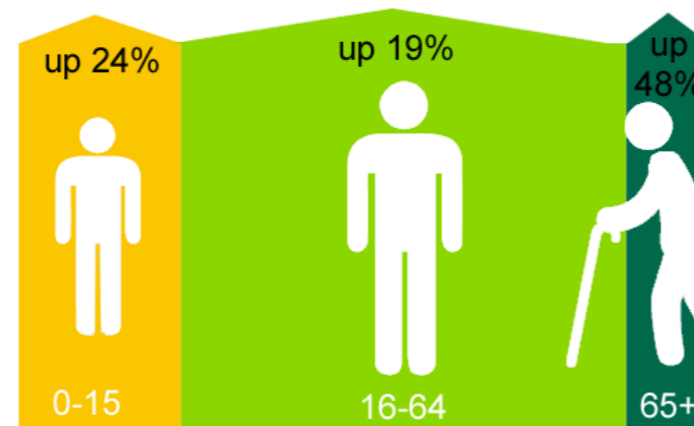
62%
Aged 16-64

14%
Aged 65+

Almost a quarter of the Shaftesbury East population is aged 0-15, higher than the national average of 19%.

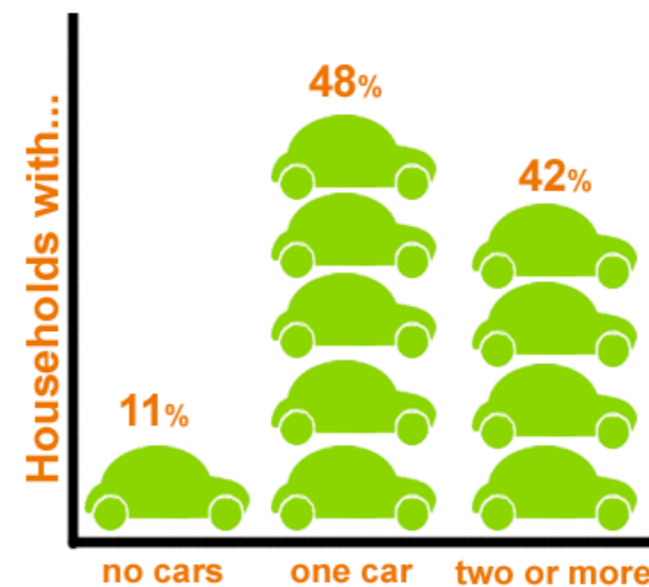
The working age population is slightly below the national figure, as is the 65+ population which is very low for North Dorset.

Population change since 2002



The total population of Shaftesbury East ward has increased by 23% since 2002, with a particular increase in those aged 65+.

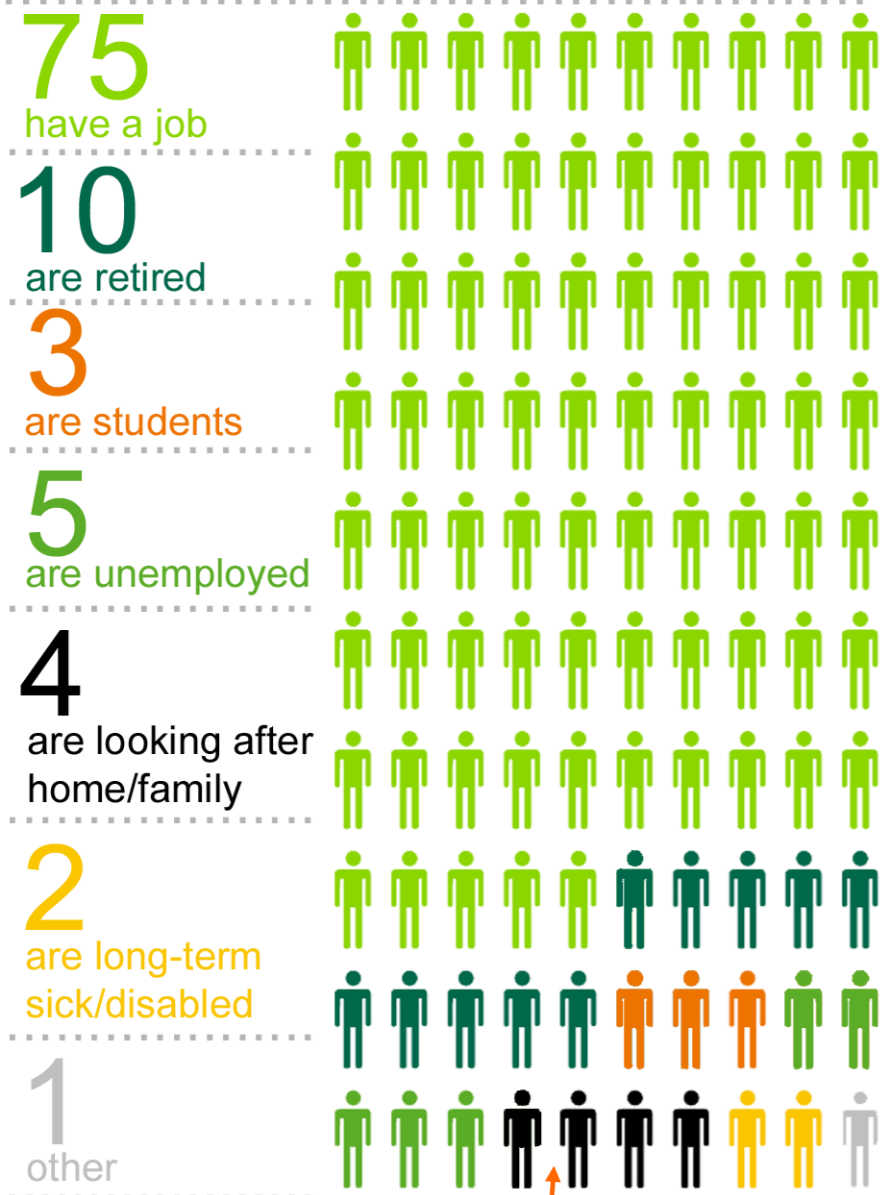
Proportion of households with cars



89% of households in Shaftesbury East ward have access to at least one car. This is relatively low for North Dorset where the highest proportion is in The Lower Tarrant ward at 97%.

Sources:
 1 Census of Population, 2011
 2 Mid-year population estimates (2002-13), ONS
 3 House price statistics for small areas (1995-2014), ONS
 4 Claimant Count (Apr-Jun avg), ONS

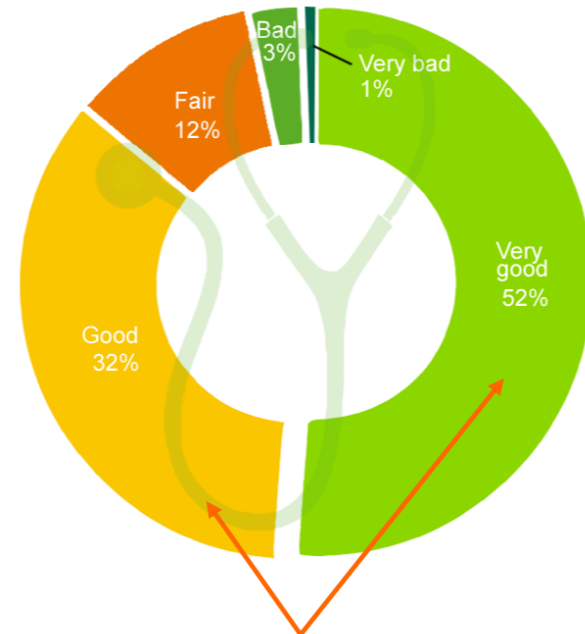
of 100 people aged 16-74 in Shaftesbury East ward...



The employment rate in Shaftesbury East ward is one of the highest in North Dorset and higher than the 62% national average. The proportion of residents that are retired is low, as is the unemployment rate.

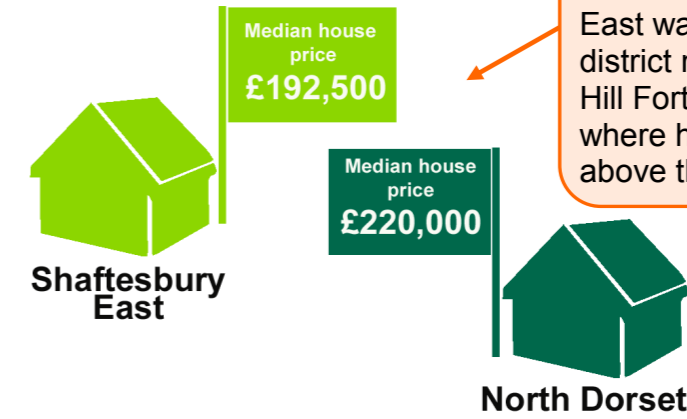
For further information contact: Consultation and Research, Chief Executive's, Dorset County Council, 01305 224256.

How the residents of Shaftesbury East ward rate their health

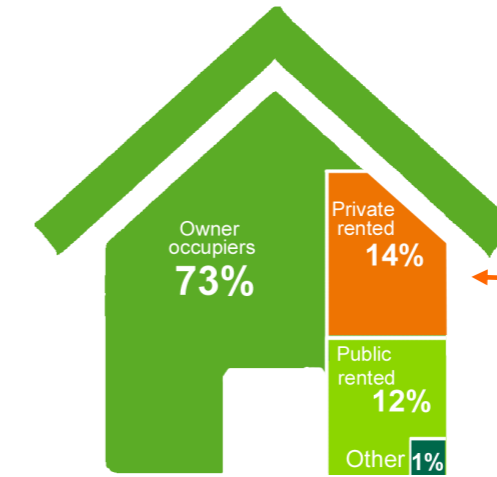


86% of Shaftesbury East ward residents rate their health as good or very good - higher than the national average of 81%. This is one of the higher percentages among the North Dorset wards.

Local house prices compared to district house prices



Median house prices in Shaftesbury East ward are £27,500 below the district median. The highest are in Hill Fords and The Beacon ward where house prices are £115,000 above the district median.



Housing tenure
Almost three quarters of households in Shaftesbury East ward are owner occupied. Nationally, the figure is 64%. 27% of households are rented.

Residents in Shaftesbury East ward are less qualified than average in North Dorset but about in line with the national figure.



Claimant Count unemployment, Apr-Jun 2015

The JSA claimant rate in Shaftesbury East ward is much lower than the county and country rates.

