

Big Numbers Box

3,731 population

More than **1 in 3** households are "older households" - above the national figure

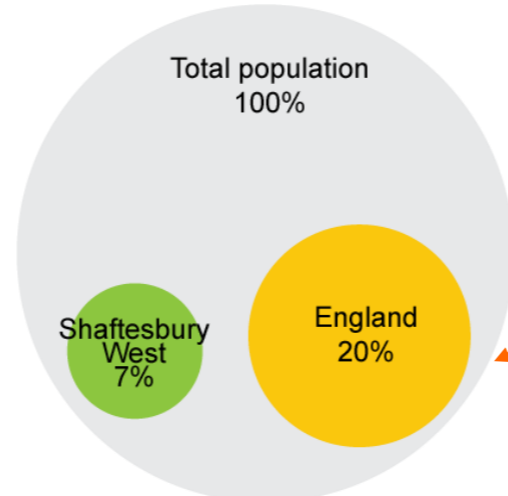
11.6% people providing unpaid care

House prices are **£27,500** below the district median

1,978 Homes in ward

30 Crimes in May 15

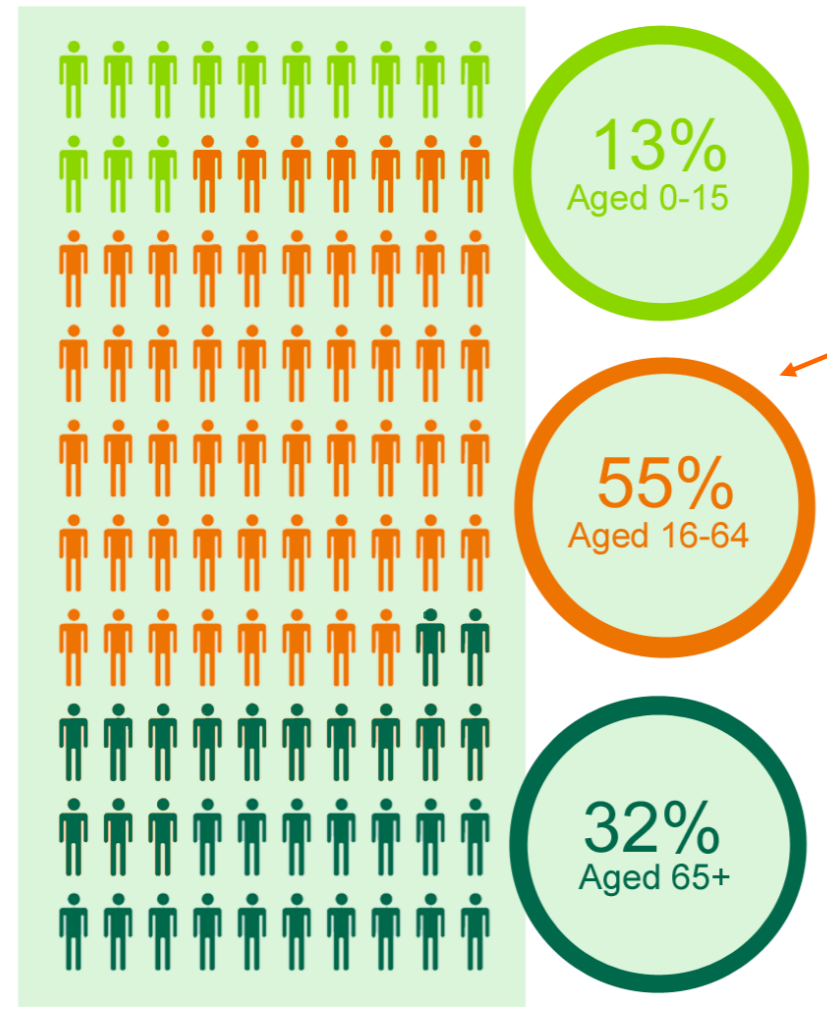
Percentage of the population that are BME



Shaftesbury West ward has one of the highest proportions of residents who are Black and Minority Ethnic (BME) in North Dorset but this is still below the national figure. ¹

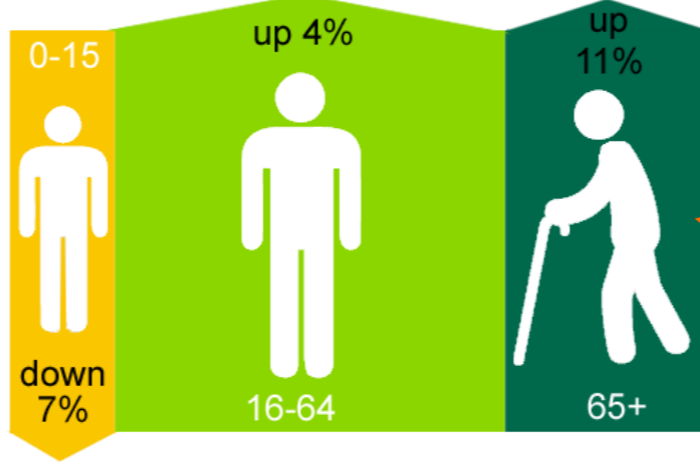


Percentage of the current population by age group (2013)



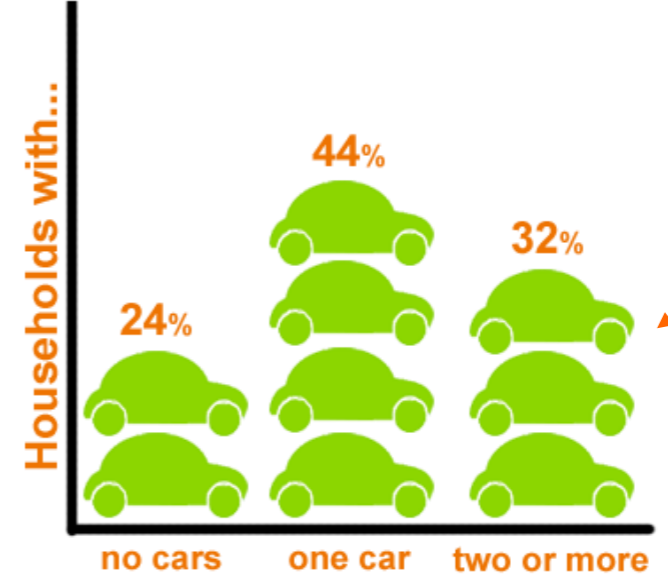
Shaftesbury West ward has one of the lowest percentages of working age people among the North Dorset wards. It is also less than the 64% national average. This is mostly due to a large proportion of residents aged 65+. Along with The Stours and Marnhull ward, this ward has the highest percentage of residents aged 65+.

Population change since 2002



The total population of Shaftesbury West ward has increased by five per cent since 2002 due to increases in the working age and 65+ population. ²

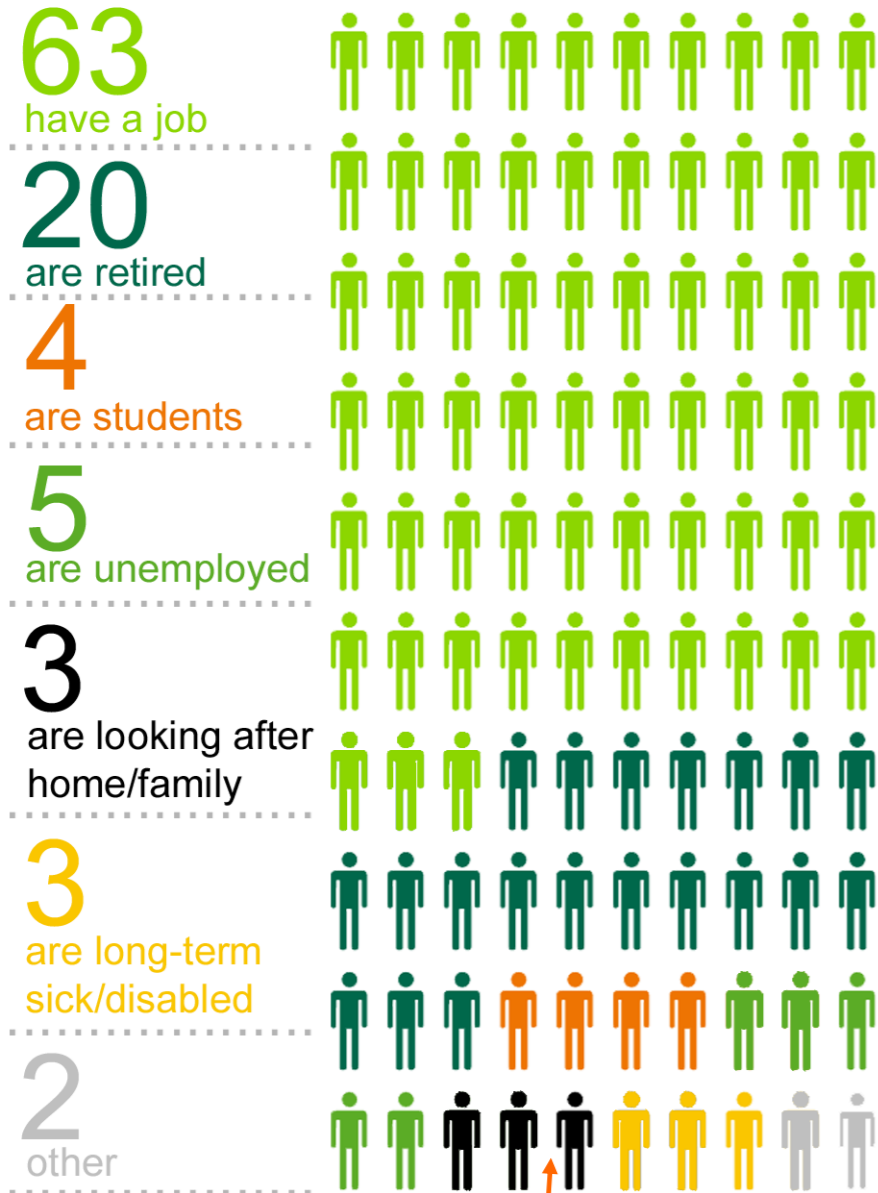
Proportion of households with cars



Shaftesbury West ward has one of the highest proportions of households with no cars. However, 76% of households have access to at least one car, higher than the national figure of 74%. ¹

Sources:
 1 Census of Population, 2011
 2 Mid-year population estimates (2002-13), ONS
 3 House price statistics for small areas (1995-2014), ONS
 4 Claimant Count (Apr-Jun avg), ONS

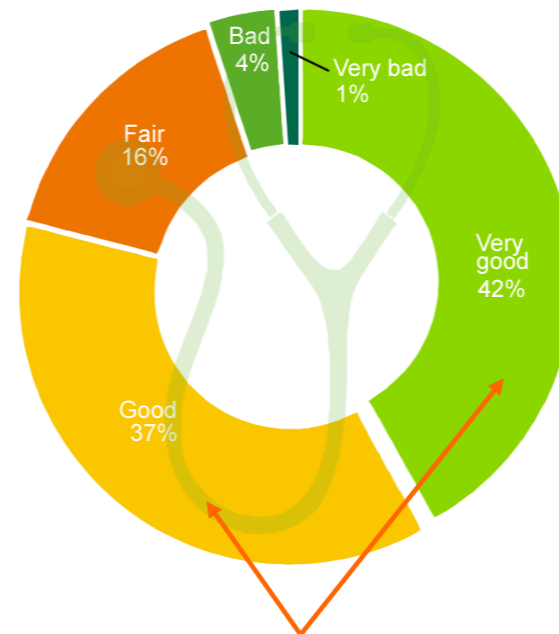
of 100 people aged 16-74 in Shaftesbury West ward...



Shaftesbury West ward has one of the lower proportions of working residents among the North Dorset wards but the proportion is about in line with the national figure. A large percentage of residents in the ward are retired and the unemployment rate is low.

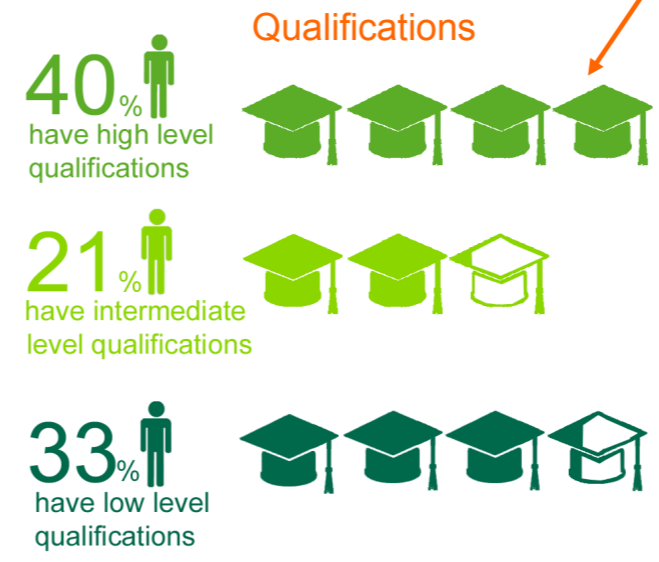
For further information contact: Consultation and Research, Chief Executive's, Dorset County Council, 01305 224256.

How the residents of Shaftesbury West ward rate their health

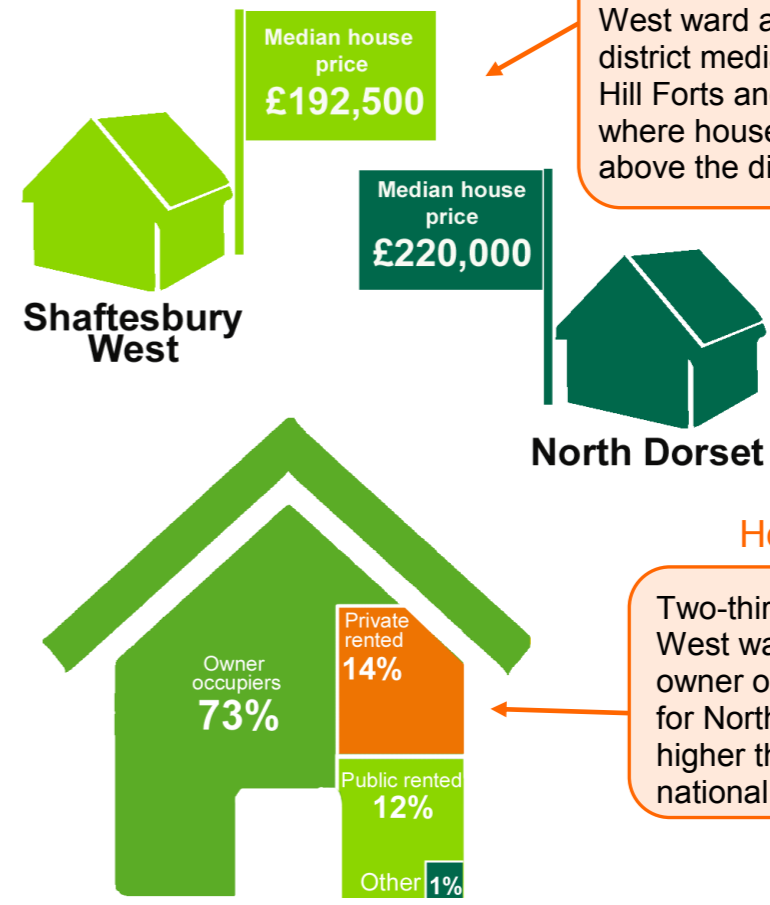


The health profile of Shaftesbury West ward is one of the least favourable in North Dorset and slightly less so than nationally (81% rating their health as good or very good).

62% of Shaftesbury West ward residents hold high or intermediate level qualifications - higher than the 59% national figure but relatively low among the North Dorset wards.



Local house prices compared to district house prices



Median house prices in Shaftesbury West ward are £27,500 below the district median. The highest are in Hill Fords and The Beacon wards where house prices are £115,000 above the district median.

Housing tenure: Two-thirds of Shaftesbury West ward households are owner occupied. This is low for North Dorset but slightly higher than the comparative national figure of 64%.

Claimant Count unemployment, Apr-Jun 2015: The JSA claimant rate in Shaftesbury West ward is below the county and national rates.

